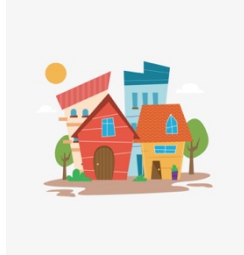


# 2021 COVID-19 Protocols

## Prior to Camp

Prior to attending camp, campers and staff are encouraged to follow “Stay Safe Principles”, and will be REQUIRED to provide proof of a negative COVID-19 PCR test 72 hours prior to camp or full vaccination. Those who don’t have proof test or vaccination will not be accepted on the bus or into camp.



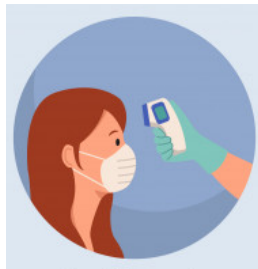
## Transportation & Check-in

It is recommended campers are driven to camp in a private vehicle with limited passengers. Bus transportation may be available with limited capacity TO camp. Bus transportation FROM camp will be available for all. Masks are required on the bus. Drop-off and pick-up all individuals will be masked and socially distancing. Passengers are subject to COVID-19 symptom screening.



## COVID-19 Screenings

At check-in to camp or the bus, campers will be asked to confirm the answers to our COVID-19 screening questions and temperature check. Staff and campers will be screened for symptoms and may have their temperature checked throughout the camp week.



## Podding, Masking & Physical Distancing

Camp will be broken down into pods of 3-4 cabins per a pod. A cabin of 10-12 campers and 2 staff is the number of different people your child will interact with without the need for masking and physical distancing. All campers are required to wear face masks and maintain physical distance when inside common buildings and interacting with other cabins or pods. Campers will be required to bring 5 masks with them to camp.



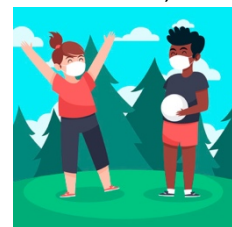
## Disinfecting & Handwashing

CYC will follow the disinfection and cleaning protocols that are suggested by the ACA and MN Department of Health. Regular hand-washing and hand sanitization will be incorporated into our daily schedule. Sanitizer is readily available throughout camp and we would encourage campers to also bring a bottle with them for their week.



## Altered Programming

Group activities such as program area rotations, evening games, camp fires, mass will be altered to adhere to smaller group sizes and physical distancing. Programming and other camp activities will be done with your cabin group throughout your week at camp!



## Food Service

Food will be served by our staff cafeteria-style. Cabins will sit at a table with their cabin group, when individuals are up and moving around from their table they will be wearing masks. Campers and staff will be encouraged to eat outside when space and weather allows.

